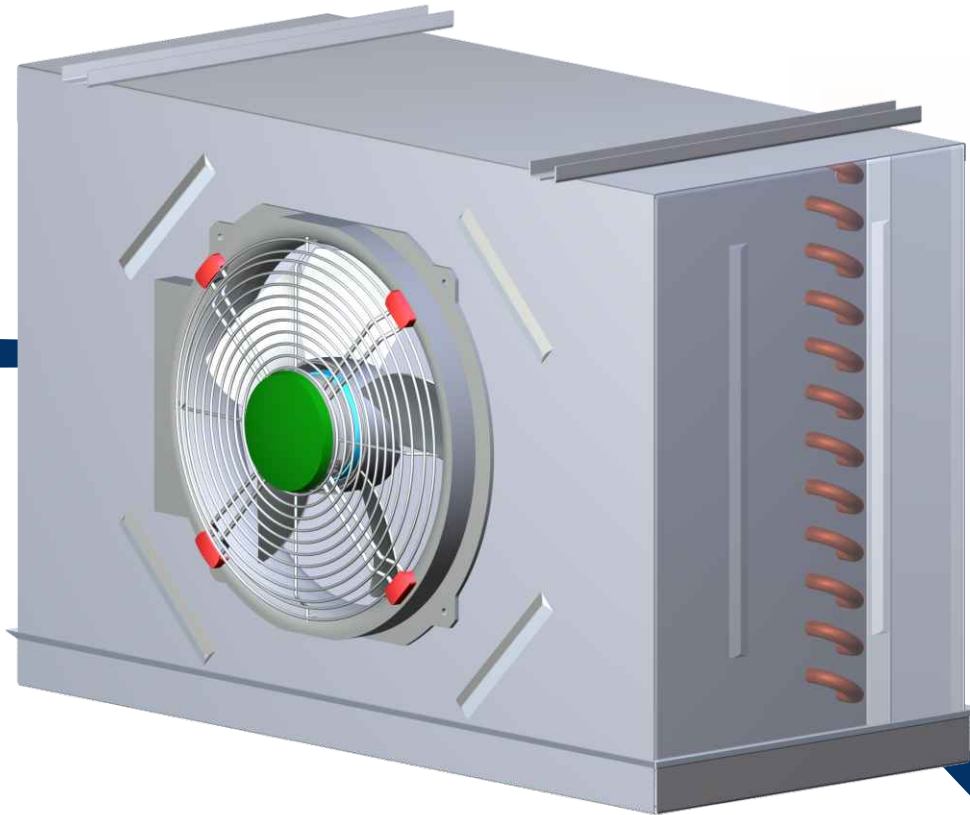




New Series with axicool EBM fans

**New Product
Unit Cooler**
Axicool Series



Advantages:

- ❶ Special voltage/frequency upon request.
- ❷ Anti-corrosion treatment of the coil upon request.
- ❸ Heavy duty copper tubes and aluminum fins for marine applications.

1. High Temperature (fin pitch 4mm)

Model	Capacity (Watt)*		Exchange surface (m ²)**	Fans			Dimensions (mm)		
	=10°C (SC1)	=8°C (SC2)		∅	m ³ /h	Watt (1~230V)	W	H	D
CH.010	2872	2021	8.9	1 x ∅ 300	1558	72	790	510	350
CH.015	3621	2616	13.3	1 x ∅ 300	1484	72	790	510	350
CH.020	4409	3036	17.7	1 x ∅ 300	1393	72	790	510	350
CH.025	5182	3464	15.5	1 x ∅ 350	2513	165	790	590	350
CH.030	6262	4135	20.7	1 x ∅ 350	2337	165	790	590	350
CH.040	8544	5735	24.2	1 x ∅ 450	4510	300	990	680	350
CH.050	10633	7111	32.2	1 x ∅ 450	4290	300	990	680	350
CH.060	12377	8065	39.5	2 x ∅ 350	4642	330	1350	590	350
CH.070	13774	8741	49.4	2 x ∅ 350	4323	330	1350	590	350
CH.080	18280	12036	50.3	2 x ∅ 450	8610	600	1850	680	350
CH.100	22627	14816	67.1	2 x ∅ 450	8422	600	1850	680	350
CH.150	31084	20337	86.6	3 x ∅ 450	12160	900	2350	680	350

2. Low Temperature (fin pitch 7mm)

Model	Capacity (Watt)*		Exchange surface (m ²)**	Fans			Dimensions (mm)		
	=8°C (SC2)	=7°C (SC3)		∅	m ³ /h	Watt (1~230V)	W	H	D
CL.010	1448	1173	5.3	1 x ∅ 300	1622	72	790	510	350
CL.015	2014	1313	8.0	1 x ∅ 300	1553	72	790	510	350
CL.020	2362	1853	10.7	1 x ∅ 300	1451	72	790	510	350
CL.025	2624	2203	9.3	1 x ∅ 350	2593	165	790	590	350
CL.030	3363	2657	12.4	1 x ∅ 350	2440	165	790	590	350
CL.040	4516	3665	14.5	1 x ∅ 450	4574	300	990	680	350
CL.050	5661	4404	19.3	1 x ∅ 450	4369	300	990	680	350
CL.060	6637	4950	23.8	2 x ∅ 350	4788	330	1350	590	350
CL.070	7358	4502	29.6	2 x ∅ 350	4502	330	1350	590	350
CL.080	9427	7548	30.1	2 x ∅ 450	9102	600	1850	680	350
CL.100	11778	9173	40.1	2 x ∅ 450	8832	600	1850	680	350
CL.150	15807	12429	51.7	3 x ∅ 450	12616	900	2350	680	350

* Capacity is calculated for R404a.

** Heavy duty copper tubes ½" and aluminum fins. Anticorrosion treatment upon request.

